



ChromoQuant® AZF

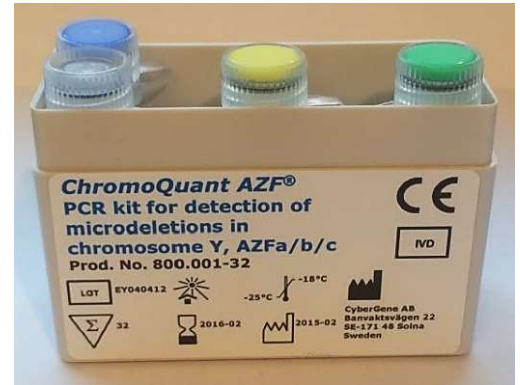


PCR/CAPILLARY ELECTROPHORESIS FOR CHROMOSOME Y MICRODELETIONS MOLECULAR DIAGNOSTIC

AZFa
AZFb (P5/proximal P1)
AZFbc (P5/distal P1 or P4/distal P1)
AZFc (b2/b4)

- ❖ Total of **17 markers** (terminal deletion included)
- ❖ 8 extra markers included for proximal/distal AZFa/AZFb breakpoints
- ❖ Validated Instruments : ABI 310, 3100, 3130, 3500, 3730

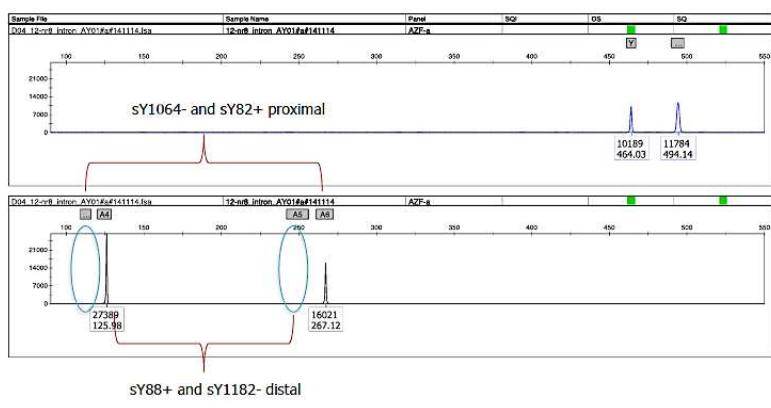
CE marked
Directive 98/79/EC
ISO 13485 / ISO 9001



**In accordance with EAA
and EMQN Guidelines 2013**

*Guidelines : European Academy of
Andrology(EAA) / European Molecular
Genetics Quality Network (EMQN)*

ChromoQuant® AZFa proximal and distal deletion



ChromoQuant AZF Kit (17 markers)

Reference 800.001-32

1 tube 32 tests
7 non polymorphic markers AZFa, b, c
+ 2 controls

1 tube 10 tests
4 Extra-markers AZFa + 2 controls

1 tube 10 tests
4 Extra-markers AZFb + 2 controls

ChromoQuant® Kit QF-PCR PRENATAL



SuperSTaR Optima

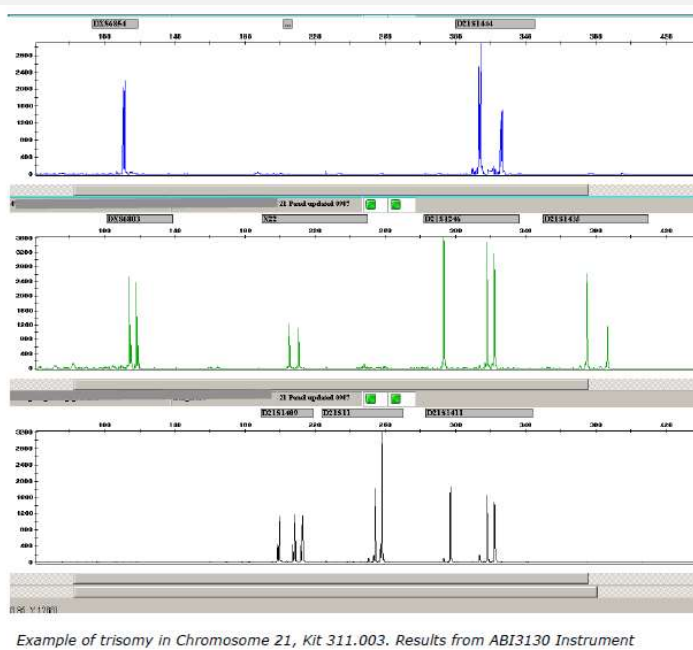
Detection of 13, 18, 21, X / Y aneuploidies Detection of maternal contaminations

**PCR/CAPILLARY ELECTROPHORESIS
FOR RAPID MOLECULAR DIAGNOSIS (6 hours) OF
ANEUPLOIDIES –KLINEFELTER SYNDROME –TURNER SYNDROME**

- ❖ Validation of **non invasive prenatal test (NIPT)**
- ❖ Total of **35 markers** (2 tubes)
- ❖ Diagnostic procedure (amniocentesis/CVS), results achieved within 6 hours enabling a **"time to reply" < 24 hours**
- ❖ 68 or 136 test format kits - Taq polymerase included
- ❖ Validated Instruments : ABI 310, 3100, 3130, 3500, 3730



**CE marked
Directive 98/79/EC
ISO 13485 / ISO 9001**



Example of trisomy in Chromosome 21, Kit 311.003. Results from ABI3130 Instrument

ChromoQuant SuperSTaR Optima - 68 tests 2 tubes, total of 35 markers Chr. 13, 18, 21, X/Y	Reference 514.301-68
ChromoQuant SuperSTaR Optima - 136 tests	Reference 514.301-136
OTHER KITS AVAILABLE	
ChromoQuant STaR Optima basic 1 - 68 tests 1 tube, 22 markers Chr. 13, 18, 21, X/Y	Reference 514.100-68
ChromoQuant STaR Optima basic 1 - 136 tests	Reference 514.100-136
ChromoQuant Optima STaR PLUS – 26 tests 2 tubes – Total of 37 markers Chr. 13, 15, 16, 18, 21, 22, X/Y	Reference 514.531-26