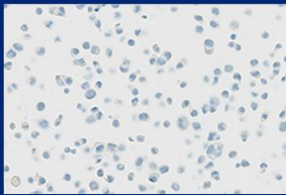


**POSITIVE CONTROLS : IHC - FISH
FFPE SLIDES – BLOCKS**

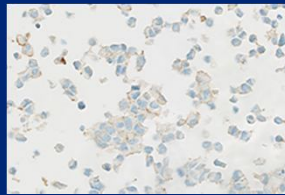
**IHC Positive Controls
HER2 (ERBB2) STATUS**

**4 cores = 4 HER2 expression levels
on a single slide or FFPE block !**

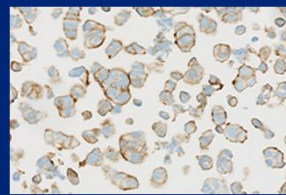
**Negative
(score -)**



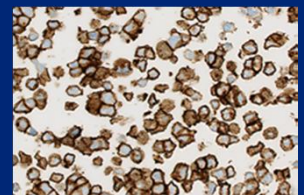
**Weak Positive
(score 1+)**



**Intermediate Positive
(score 2+)**



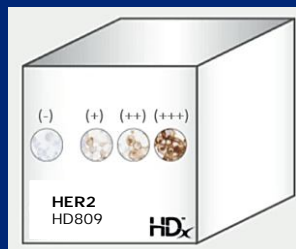
**Strong Positive
(score 3+)**



**HER2 (ERBB2) : 4-core Slide/Block
(-, 1+, 2+, 3+)**

5-Slide Pack : Reference HD808

FFPE block (500 slices) : Reference HD809



- ❖ For routine performance monitoring
- ❖ Manufactured under a Quality Management System which complies with ISO Standards 9001 / 13485
- ❖ Verified by IHC assay and Quantitative Digital Pathology (QDP)
- ❖ Cell Density : 1-1.5 x 10⁴ cells/core
(Fixative Method : 10% Formalin, Core Diameter : 2mm)
- ❖ Format : 5-slide* Pack
or 0.5 cm FFPE Block (~500 slices)

*Superfrost Plus

More Positive Controls Available : *contact us*

Research Use Only

IHC : ALK, ROS1, CD274 (PD-L1), ER&PR, c-MET, BRAF, MKI67 (Ki67), Lung Panel (ALK, ROS1, MET)

FISH : ALK, ROS1, c-MET, RET, ERBB2 (HER2), Lung Panel (ALK, ROS1, RET, MET)