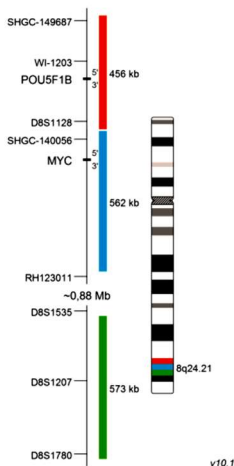




## SONDES TUMEURS SOLIDES - FFPE

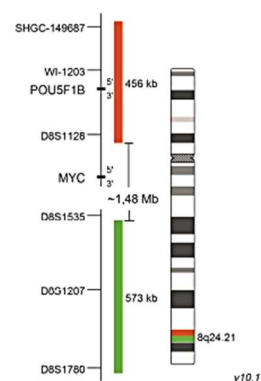
### XL MYC BA

Réf. D-6030-100-TC



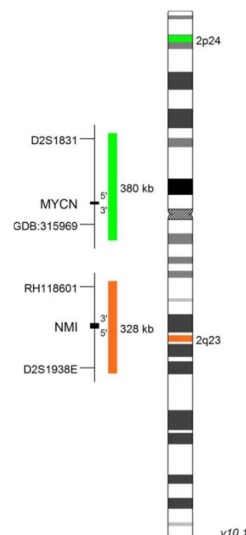
### XL MYC BA

Réf. D-6023-100-OG



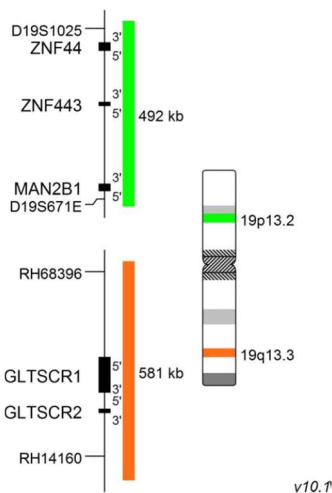
### XL MYCN amp

Réf. D-6031-100-OG



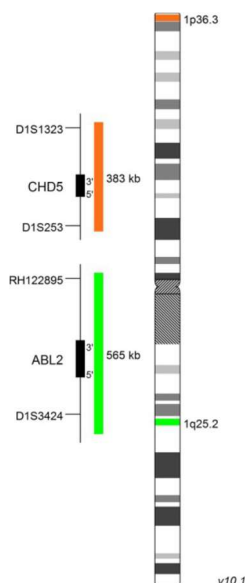
### XL 19p/19q del

Réf. D-6019-100-OG



### XL 1p36/1q25 del

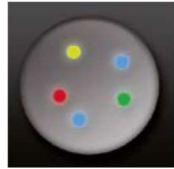
Réf. D-6021-100-OG



**Autres nouveautés  
- SARCOMES -**

**XL EWSR1 BA  
XL DDIT3 BA  
XL SS18 BA  
XL FOXO1 BA  
XL FUS BA**

Liste complète des sondes XL  
Hémato-oncologie au verso



## XL – SONDÉS TUMEURS SOLIDES

**Format 10 tests (100 µl)**  
Marquage direct ORANGE – VERT – AQUA



ISO13485



Référence	Description	Catégorie de Sonde	Fluorochrome
D-6035-100-OG	XL FUS BA, <b>new</b>	Break Apart	orange/green
D-6034-100-OG	XL FOXO1 BA, <b>new</b>	Break Apart	orange/green
D-6033-100-OG	XL SS18 BA, <b>new</b>	Break Apart	orange/green
D-6032-100-OG	XL DDIT3 BA, <b>new</b>	Break Apart	orange/green
D-6011-100-OG	XL EWSR1 BA, <b>new</b>	Break Apart	orange/green
D-6021-100-OG	XL 1p36/1q25 del, <b>new</b>	Deletion	orange/green
D-6019-100-OG	XL 19p/19q del, <b>new</b>	Deletion	orange/green
D-6031-100-OG	XL MYCN amp, <b>new</b>	Amplification	orange/green
D-6001-100-OG	XL ALK BA	Break Apart	orange/green
D-6005-100-OG	XL EGFR amp	Amplification	orange/green
D-6008-100-OG	XL MYC amp	Amplification	orange/green
D-6010-100-OG	XL ERBB2 (HER2 / NEU) amp	Amplification	orange/green
D-6015-100-OG	XL MALT1 BA	Break Apart	orange/green
D-6016-100-OG	XL BCL6 BA	Break Apart	orange/green
D-6018-100-OG	XL BCL2 BA	Break Apart	orange/green
D-6023-100-OG	XL MYC BA	Break Apart	orange/green
D-6029-100-OG	XL ROS1-GOPC BA	Break Apart	orange/green
D-6030-100-TC	XL MYC BA Triple-color	Break Apart - Triple Color	orange/green/blue
D-5047-100-OG	XL MDM2	Amplification	orange/green
D-5073-100-OG	XL ETV6	Break Apart	orange/green

D-0905-025-TF	TissueFISH Pretreatment Kit : FISH/CISH Kit de prétraitement prêt à l'emploi pour coupes FFPE	Réactifs pour 20-30 lames
---------------	--	------------------------------