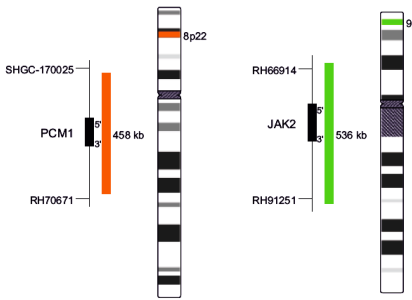
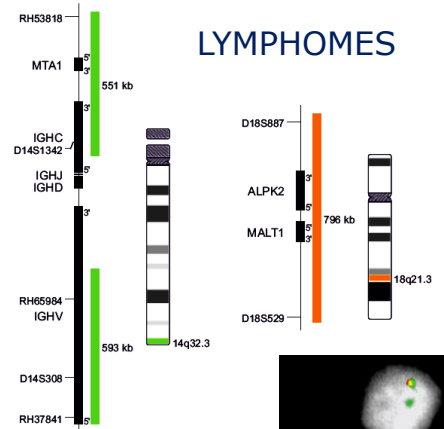
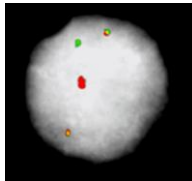


NOUVEAUTÉS FISH HEMATO-ONCOLOGIE

NÉOPLASMES MYÉLOPROLIFÉRATIFS (NMP)
SYNDROMES MYÉLODYSPLASIQUES (SMD)
Fusion t(8;9)(p22;p24.1)

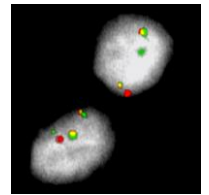


**XL t(8;9)
PCM1/JAK2 DF
D-5120-100-OG**

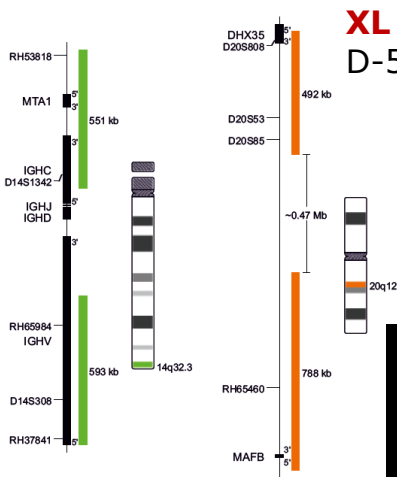


LYMPHOMES

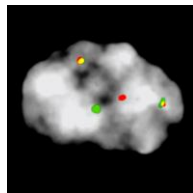
**XL t(14;18)
IGH/MALT1 DF
D-6020-100-OG**



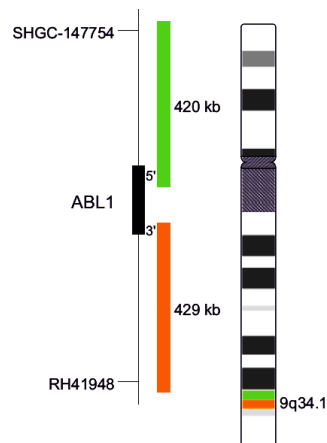
MYÉLOMES MULTIPLES (MM)
Couverture MAFB optimisée !



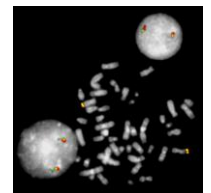
**XL IGH/MAFB DF
D-5146-100-OG**



LEUCÉMIES AIGÜES
LYMPHOBLASTIQUES (LAL)



**XL ABL1 BA
D-5148-100-OG**



Liste complète des sondes XL Héματο-oncologie au verso



XL – SONDES HEMATO-ONCOLOGIE

Format 10 tests (100 µl)
Marquage direct
ORANGE – VERT – AQUA



D-5038-100-OG	XL TET2	
D-5039-100-OG	XL 6q21/6q23	
D-5041-100-OG	XL FGFR1	
D-5042-100-OG	XL 5q31/5q33	
D-5043-100-TC	XL 7q22/7q36	● ● ●
D-5044-100-TC	XL CLL Kit (XL DLEU/LAMP/12cen + XL ATM/TP53)	● ● ●
D-5046-100-OG	XL ATM/TP53	
D-5047-100-OG	XL MDM2 (12q15)	
D-5048-100-OG	XL Iso(17q)	
D-5052-100-OG	XL BCR/ABL1 plus	
D-5053-100-OG	XL CDKN2A	
D-5054-100-OG	XL DLEU/LAMP	
D-5055-100-TC	XL DLEU/LAMP/12cen	● ● ●
D-5059-100-OG	XL MECOM 3q26	
D-5060-100-OG	XL MLL plus	
D-5063-100-TC	XL 4q12	● ● ●
D-5067-100-OG	XL DLEU/TP53	
D-5068-100-TC	XL del(7)(q22q31)	● ● ●
D-5070-100-TC	XL RB1/DLEU/LAMP	● ● ●
D-5071-100-OG	XL CCND1	
D-5073-100-OG	XL ETV6	
D-5077-100-OG	XL NUP98	
D-5081-100-TC	XL 5q31/5q33/5p15	
D-5082-100-TC	XL BCR/ABL1/ASS	● ● ●
D-5085-100-OG	XL Del(5)(q31)	
D-5086-100-OG	XL t(15;17) DF	
D-5087-100-OG	XL RARA BA	
D-5088-100-TC	XL 6q21/6q23/6cen	● ● ●
D-5089-100-OG	XL TP53/NF1	
D-5090-100-OG	XL KMT2A BA	
D-5091-100-OG	XL Del(5)(q33)	
D-5092-100-OG	XL CFBF	
D-5095-100-TC	XL 5p15/9q22/15q22	● ● ●
D-5096-100-OG	XL RUNX1	
D-5097-100-OG	XL t(6;9) DEK/NUP214	
D-5098-100-OG	XL JAK2	
D-5099-100-OG	XL CDKN2C/CKS1B	
D-5101-100-OG	XL t(7;12)	
D-5102-100-OG	XL ATM/11cen	
D-5103-100-OG	XL TP53/17cen	
D-5104-100-OG	XL 5q32 PDGFRB BA	
D-5105-100-OG	XL t(14;20) IGH/MAFB DF	
D-5106-100-OG	XL TCRA/D	

D-5107-100-OG	XL IGH BA	
D-5108-100-OG	XL t(4;14) FGFR3/IGH DF	
D-5109-100-OG	XL t(6;14) CCND3/IGH DF	
D-5110-100-OG	XL t(8;14) MYC/IGH DF	
D-5111-100-OG	XL t(11;14) MYEOV/IGH DF	
D-5112-100-OG	XL t(14;16) IGH/MAF DF	
D-5113-100-OG	XL t(14;18) IGH/BCL2 DF	
D-5114-100-OG	XL t(8;21) plus	
D-5115-100-OG	XL t(12;21) ETV6/RUNX1 DF	
D-5116-100-OG	XL 2p11 IGK BA	
D-5117-100-OG	XL 22q11 IGL BA	
D-5118-100-OG	XL CDKN2A/9q22	
D-5119-100-OG	XL Del(20q) plus	
D-5120-100-OG	XL t(8;9) PCM1/JAK2 DF New	
D-5121-100-OG	XL 20q12/20qter plus	
D-5122-100-TC	XL 20q12/20qter/8cen plus	● ● ●
D-5123-100-OG	XL 4q12 DC	
D-5124-100-OG	XL t(3;3) GATA2/MECOM DF	
D-5125-100-TC	XL t(8;14) MYC/IGH DF 8cen	● ● ●
D-5126-100-OG	XL CFBF/MYH11 plus	
D-5128-100-OG	XL BCL3 BA	
D-5129-100-OG	XL TLX3 BA	
D-5130-100-OG	XL CRLF2 BA	
D-5133-100-OG	XL t(9;11) MLLT3/KMT2A DF	
D-5137-100-OG	XL PDGFRA BA	
D-5138-100-OG	XL ABL2 BA	
D-5146-100-OG	XL IGH/MAFB DF New	
D-5148-100-OG	XL ABL1 BA New	
D-5150-100-OG	XL P2RY8 del	
D-6001-100-OG	XL ALK BA	
D-6005-100-OG	XL EGFR amp	
D-6008-100-OG	XL MYC amp	
D-6010-100-OG	XL ERBB2 (HER2/NEU) amp	
D-6011-100-OG	XL EWSR1 BA	
D-6015-100-OG	XL MALT1 BA	
D-6016-100-OG	XL BCL6 BA	
D-6018-100-OG	XL BCL2 BA	
D-6019-100-OG	XL 19p/19q del	
D-6020-100-OG	XL t(14;18) IGH/MALT1 DF New	
D-6021-100-OG	XL 1p36/1q25 del	
D-6023-100-OG	XL MYC BA	
D-6029-100-OG	XL ROS1-GOPC BA	
D-6030-100-TC	XL MYC BA	● ● ●
D-6031-100-OG	XL MYCN amp	
D-6032-100-OG	XL DDIT3 BA	
D-6033-100-OG	XL SS18 BA	
D-6034-100-OG	XL FOXO1 BA	
D-6035-100-OG	XL FUS BA	
D-6040-100-OG	XL IRF4 BA	

SONDES TUMEURS SOLIDES FPPE

● ● ● Sonde 3 couleurs