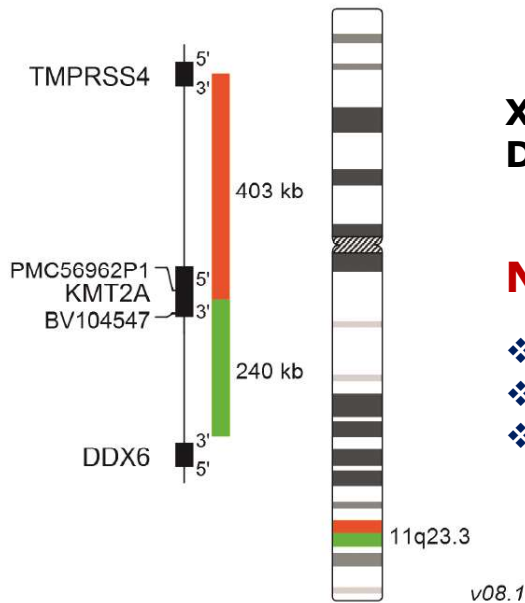


# NOUVEAUTÉS FISH HEMATO-ONCOLOGIE



**XL KMT2A BA  
D-5090-100-OG**



## Nouvelle sonde MLL breakapart !

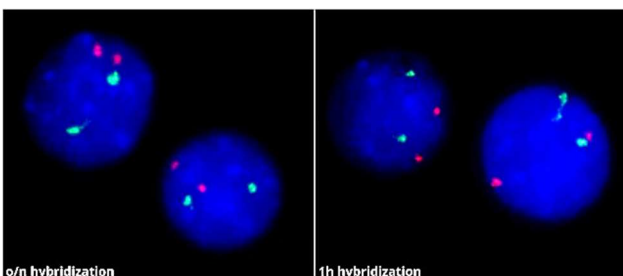
- ❖ Diagnostic plus sensible des leucémies aiguës
- ❖ **Couverture KMT2A optimisée**
- ❖ Détection des translocations et remaniements de type insertion génique

## RapidHyb !

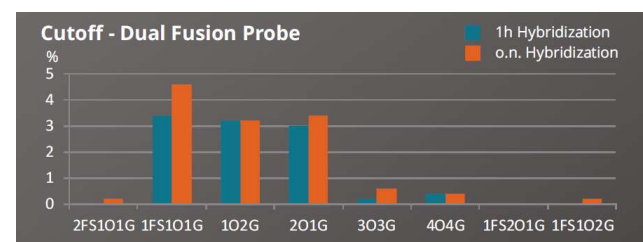
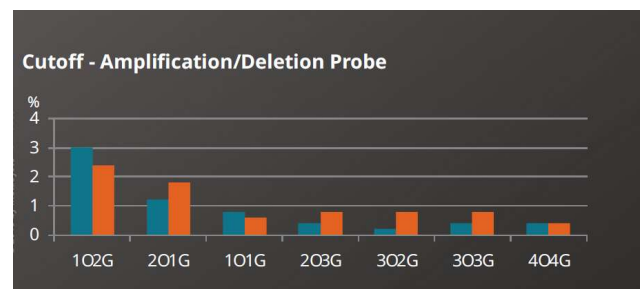
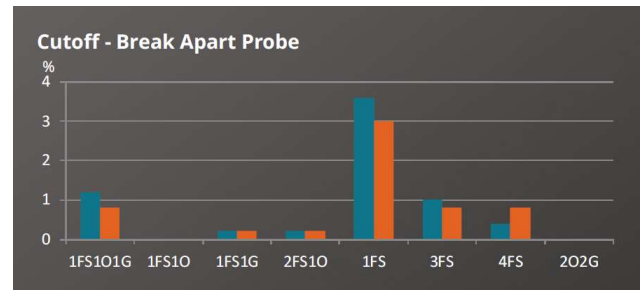
**Protocole d'hybridation de courte durée (1h-4h) validé pour toutes les sondes locus spécifiques (hors FFPE) \***

- ❖ Cut-off similaires 1h vs. 1 nuit

### Sonde XL MLLT3/KMT2A DF



\*Liste complète des sondes XL  
Hémato-oncologie au verso





## XL – SONDÉS HEMATO-ONCOLOGIE

**Format 10 tests (100 µl)**  
Marquage direct ORANGE – VERT - AQUA



|               |  |       |
|---------------|--|-------|
| D-5033-100-OG | XL IGL   |       |
| D-5034-100-OG | XL IGK   |       |
| D-5038-100-OG | XL TET2  |       |
| D-5039-100-OG | XL 6q21/6q23                                     |       |
| D-5041-100-OG | XL FGFR1   |       |
| D-5042-100-OG | XL 5q31/5q33                                     |       |
| D-5043-100-TC | XL 7q22/7q36                                     | ● ● ● |
| D-5044-100-TC | XL CLL Kit<br>(XL DLEU/LAMP/12cen + XL ATM/TP53) | ● ● ● |
| D-5046-100-OG | XL ATM/TP53                                      |       |
| D-5138-100-OG | XL ABL2 BA <i>new</i>                            |       |
| D-5048-100-OG | XL Iso(17q)                                      |       |
| D-5052-100-OG | XL BCR/ABL1 plus                                 |       |
| D-5053-100-OG | XL CDKN2A  |       |
| D-5054-100-OG | XL DLEU/LAMP                                     |       |
| D-5055-100-TC | XL DLEU/LAMP/12cen                               | ● ● ● |
| D-5059-100-OG | XL MECOM 3q26                                    |       |
| D-5060-100-OG | XL MLL plus                                      |       |
| D-5063-100-TC | XL 4q12  | ● ● ● |
| D-5067-100-OG | XL DLEU/TP53                                     |       |
| D-5068-100-TC | XL del(7)(q22q31)                                | ● ● ● |
| D-5070-100-TC | XL RB1/DLEU/LAMP                                 | ● ● ● |
| D-5071-100-OG | XL CCND1   |       |
| D-5073-100-OG | XL ETV6  |       |
| D-5077-100-OG | XL NUP98   |       |
| D-5081-100-TC | XL 5q31/5q33/5p15                                | ● ● ● |
| D-5082-100-TC | XL BCR/ABL1/ASS                                  | ● ● ● |
| D-5085-100-OG | XL Del(5)(q31)                                   |       |
| D-5086-100-OG | XL t(15;17) DF                                   |       |
| D-5088-100-TC | XL 6q21/6q23/6cen                                | ● ● ● |
| D-5089-100-OG | XL TP53/NF1                                      |       |
| D-5091-100-OG | XL Del(5)(q33)                                   |       |
| D-5092-100-OG | XL CBF3  |       |
| D-5095-100-TC | XL 5p15/9q22/15q22 Hyperdiploidy                 | ● ● ● |
| D-5096-100-OG | XL RUNX1   |       |
| D-5097-100-OG | XL t(6;9) DEK/NUP214                             |       |
| D-5098-100-OG | XL JAK2  |       |
| D-5099-100-OG | XL CDKN2C/CKS1B                                  |       |
| D-5101-100-OG | XL t(7;12)                                       |       |
| D-5102-100-OG | XL ATM/11cen                                     |       |
| D-5103-100-OG | XL TP53/17cen                                    |       |
| D-5104-100-OG | XL 5q32 PDGFRB BA                                |       |
| D-5105-100-OG | XL t(14;20) IGH/MAFB DF                          |       |
| D-5106-100-OG | XL TCRA/D  |       |

|               |                                      |       |
|---------------|--------------------------------------|-------|
| D-5107-100-OG | XL IGH BA                            |       |
| D-5108-100-OG | XL t(4;14) FGFR3/IGH DF              |       |
| D-5109-100-OG | XL t(6;14) CCND3/IGH DF              |       |
| D-5110-100-OG | XL t(8;14) MYC/IGH DF                |       |
| D-5111-100-OG | XL t(11;14) MYEOV/IGH DF             |       |
| D-5112-100-OG | XL t(14;16) IGH/MAF DF               |       |
| D-5113-100-OG | XL t(14;18) IGH/BCL2 DF              |       |
| D-5114-100-OG | XL t(8;21) plus                      |       |
| D-5115-100-OG | XL t(12;21) ETV6/RUNX1 DF            |       |
| D-5116-100-OG | XL 2p11 IGK BA <i>new</i>            |       |
| D-5117-100-OG | XL 22q11 IGL BA <i>new</i>           |       |
| D-5118-100-OG | XL CDKN2A/9q22                       |       |
| D-5119-100-OG | XL Del(20q) plus                     |       |
| D-5121-100-OG | XL 20q12/20qter plus                 |       |
| D-5123-100-OG | XL 4q12 DC                           |       |
| D-5124-100-OG | XL t(3;3) GATA2/MECOM DF             |       |
| D-5125-100-TC | XL t(8;14) MYC/IGH DF 8cen           | ● ● ● |
| D-5126-100-OG | XL CBF3/MYH11 plus                   |       |
| D-5128-100-OG | XL BCL3 BA <i>new</i>                |       |
| D-5129-100-OG | XL TLX3 BA <i>new</i>                |       |
| D-5087-100-OG | XL RARA BA <i>new</i>                |       |
| D-5090-100-OG | XL KMT2A BA <i>new</i>               |       |
| D-5122-100-TC | XL 20q12/20qter/8cen plus <i>new</i> | ● ● ● |
| D-5133-100-OG | XL t(9;11) MLLT3/KMT2A DF            |       |
| D-5137-100-OG | XL PDGFRA BA <i>available soon</i>   |       |
| D-6040-100-OG | XL IRF4 BA <i>new</i>                |       |
| D-6001-100-OG | XL ALK BA                            |       |
| D-6005-100-OG | XL EGFR amp                          |       |
| D-6008-100-OG | XL MYC amp                           |       |
| D-6010-100-OG | XL ERBB2 (HER2/NEU) amp              |       |
| D-6015-100-OG | XL MALT1 BA                          |       |
| D-6016-100-OG | XL BCL6 BA                           |       |
| D-6018-100-OG | XL BCL2 BA                           |       |
| D-6023-100-OG | XL MYC BA                            |       |
| D-6029-100-OG | XL ROS1-GOPC BA                      |       |
| D-6030-100-TC | XL MYC BA Triple-color               | ● ● ● |
| D-5047-100-OG | XL MDM2 (12q15)                      |       |
| D-6021-100-OG | XL 1p36/1q25 del <i>new</i>          |       |
| D-6019-100-OG | XL 19p/19q del <i>new</i>            |       |
| D-6031-100-OG | XL MYCN amp <i>new</i>               |       |
| D-6035-100-OG | XL FUS BA <i>new</i>                 |       |
| D-6034-100-OG | XL FOXO1 BA <i>new</i>               |       |
| D-6033-100-OG | XL SS18 BA <i>new</i>                |       |
| D-6032-100-OG | XL DDIT3 BA <i>new</i>               |       |
| D-6011-100-OG | XL EWSR1 BA <i>new</i>               |       |

● ● ● Sonde 3 couleurs

SONDES TUMEURS SOLIDES FFPE