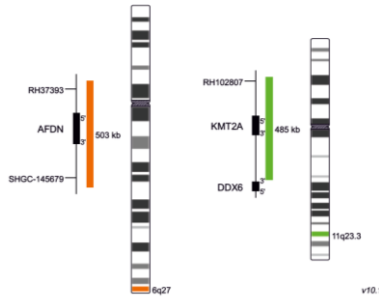
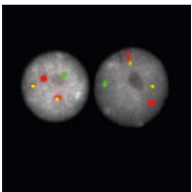
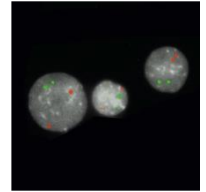
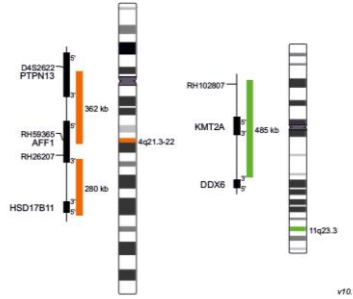


**NEW ! AML/ALL
KMT2A DUAL FUSION PROBES**

XL t(4;11) AFF1/KMT2A DF

[D-5131-100-OG](#)

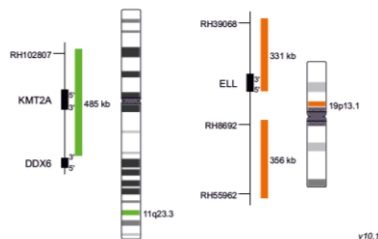
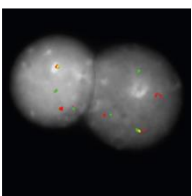
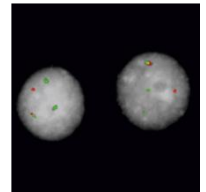
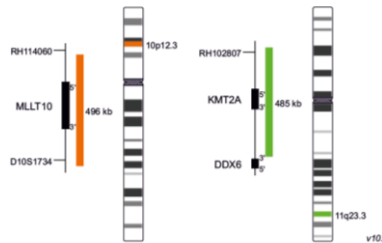


XL t(6;11) AFDN/KMT2A DF

[D-5132-100-OG](#)

XL t(10;11) MLLT10/KMT2A DF

[D-5134-100-OG](#)

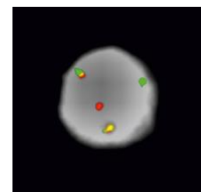
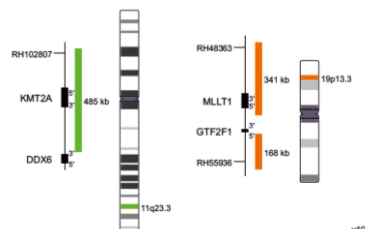


XL t(11;19) KMT2A/ELL DF

[D-5135-100-OG](#)

XL t(11;19) KMT2A/MLLT1 DF

[D-5136-100-OG](#)





XL – HEMATO-ONCOLOGY RANGE : 10 tests (100 µl) Format



D-5038-100-OG	XL TET2		D-5113-100-OG	XL t(14;18) IGH/BCL2 Df	
D-5039-100-OG	XL 6q21/6q23		D-5114-100-OG	XL t(8;21) plus	
D-5041-100-OG	XL FGFR1		D-5115-100-OG	XL t(12;21) ETV6/RUNX1 DF	
D-5042-100-OG	XL 5q31/5q33		D-5116-100-OG	XL 2p11 IGK BA	
D-5043-100-TC	XL 7q22/7q36	●●●	D-5117-100-OG	XL 22q11 IGL BA	
D-5044-100-TC	XL CLL Kit (XL DLEU/LAMP/12cen + XL ATM/TP53)	●●●	D-5118-100-OG	XL CDKN2A/9q22	
D-5046-100-OG	XL ATM/TP53		D-5119-100-OG	XL Del(20q) plus	
D-5047-100-OG	XL MDM2 (12q15)		D-5120-100-OG	XL t(8;9) PCM1/JAK2 DF New	
D-5048-100-OG	XL Iso(17q)		D-5121-100-OG	XL 20q12/20qter plus	
D-5052-100-OG	XL BCR/ABL1 plus		D-5122-100-TC	XL 20q12/20qter/8cen plus	●●●
D-5053-100-OG	XL CDKN2A		D-5123-100-OG	XL 4q12 DC	
D-5054-100-OG	XL DLEU/LAMP		D-5124-100-OG	XL t(3;3) GATA2/MECOM DF	
D-5055-100-TC	XL DLEU/LAMP/12cen	●●●	D-5125-100-TC	XL t(8;14) MYC/IGH DF 8cen	●●●
D-5059-100-OG	XL MECOM 3q26		D-5126-100-OG	XL CBFβ/MYH11 plus	
D-5060-100-OG	XL MLL plus		D-5128-100-OG	XL BCL3 BA	
D-5063-100-TC	XL 4q12	●●●	D-5129-100-OG	XL TLX3 BA	
D-5067-100-OG	XL DLEU/TP53		D-5130-100-OG	XL CRLF2 BA	
D-5068-100-TC	XL del(7)(q22q31)	●●●	D-5131-100-OG	XL t(4;11) AFF1/KMT2A DF New	
D-5070-100-TC	XL RB1/DLEU/LAMP	●●●	D-5132-100-OG	XL t(6;11) AFDN/KMT2A DF New	
D-5071-100-OG	XL CCND1		D-5133-100-OG	XL t(9;11) MLLT3/KMT2A DF	
D-5073-100-OG	XL ETV6		D-5134-100-OG	XL t(10;11) MLLT10/KMT2A DF New	
D-5077-100-OG	XL NUP98		D-5135-100-OG	XL t(11;19) KMT2A/ELL DF New	
D-5081-100-TC	XL 5q31/5q33/5p15		D-5136-100-OG	XL t(11;19) KMT2A/MLLT1 DF New	
D-5082-100-TC	XL BCR/ABL1/ASS	●●●	D-5137-100-OG	XL PDGFRA BA	
D-5085-100-OG	XL Del(5)(q31)		D-5138-100-OG	XL ABL2 BA	
D-5086-100-OG	XL t(15;17) DF		D-5146-100-OG	XL IGH/MAFB DF New	
D-5087-100-OG	XL RARA BA		D-5148-100-OG	XL ABL1 BA New	
D-5088-100-TC	XL 6q21/6q23/6cen	●●●	D-5150-100-OG	XL P2RY8 del	
D-5089-100-OG	XL TP53/NF1		D-6001-100-OG	XL ALK BA	
D-5090-100-OG	XL KMT2A BA		D-6005-100-OG	XL EGFR amp	
D-5091-100-OG	XL Del(5)(q33)		D-6008-100-OG	XL MYC amp	
D-5092-100-OG	XL CBFβ		D-6010-100-OG	XL ERBB2 (HER2/NEU) amp	
D-5095-100-TC	XL 5p15/9q22/15q22	●●●	D-6011-100-OG	XL EWSR1 BA	
D-5096-100-OG	XL RUNX1		D-6015-100-OG	XL MALT1 BA	
D-5097-100-OG	XL t(6;9) DEK/NUP214		D-6016-100-OG	XL BCL6 BA	
D-5098-100-OG	XL JAK2		D-6018-100-OG	XL BCL2 BA	
D-5099-100-OG	XL CDKN2C/CKS1B		D-6019-100-OG	XL 19p/19q del	
D-5101-100-OG	XL t(7;12)		D-6020-100-OG	XL t(14;18) IGH/MALT1 DF New	
D-5102-100-OG	XL ATM/11cen		D-6021-100-OG	XL 1p36/1q25 del	
D-5103-100-OG	XL TP53/17cen		D-6023-100-OG	XL MYC BA	●●●
D-5104-100-OG	XL 5q32 PDGFRB BA		D-6029-100-OG	XL ROS1-GOPC BA	
D-5105-100-OG	XL t(14;20) IGH/MAFB DF		D-6030-100-TC	XL MYC BA	
D-5106-100-OG	XL TCRA/D		D-6031-100-OG	XL MYCN amp	
D-5107-100-OG	XL IGH BA		D-6032-100-OG	XL DDIT3 BA	
D-5108-100-OG	XL t(4;14) FGFR3/IGH DF		D-6033-100-OG	XL SS18 BA	
D-5109-100-OG	XL t(6;14) CCND3/IGH DF		D-6034-100-OG	XL FOXO1 BA	
D-5110-100-OG	XL t(8;14) MYC/IGH DF		D-6035-100-OG	XL FUS BA	
D-5111-100-OG	XL t(11;14) MYEOV/IGH DF		D-6040-100-OG	XL IRF4 BA	
D-5112-100-OG	XL t(14;16) IGH/MAF DF				

●●● 3 color probe